



A Donald **BASIL** Company

# Life Science Solutions

The LYNX mission is to provide Animal Care Washing Systems of the highest standards, quality, and reliability in the industry. Our service and customer care will be unmatched.

## Model 302BW Bottle Washer

### APPLICATION:

The Bottle Washer is a heavy duty, single chamber, hydro-spray washer designed for thorough, efficient cleaning of feeder bottles and miscellaneous items used in the care of laboratory animals.

### STANDARD FEATURES:

- Vertical Sliding Door
- Rotating Spray Jet System
- Personnel Safety Features
- Micro-Computer Control System
- Automatic Ten-Phase Treatment Cycle
- Temperature Guarantee
- Insulated Construction
- Incoming Utility Gauges
- Interior Illumination

### CONSTRUCTION:

- All Stainless Steel Construction
- Automatic Water Level Control
- 3 HP Treatment Pump
- Stainless Steel Steam Coil Heating
- Touch Screen Operator Interface
- Programmable Cycles
- Direct Reading Pump Pressure Gauge
- Double-Pane Glass Window

### ACCESSORIES:

- Barrier Wall Flange Assembly
- Modular Wall
- Transfer Cart
- Bottom Rotary Jet Spray Header
- Bottom Fixed Jet Spray Header
- Feeder Bottle Baskets



### SIZE:

**Compartment:** 22" wide x 32" high x 34" deep

**Overall Unit:** 46" wide x 80" high x 40½" deep

**Note:** Washer can be designed to any size to meet new or existing applications.

### OPTIONAL FEATURES:

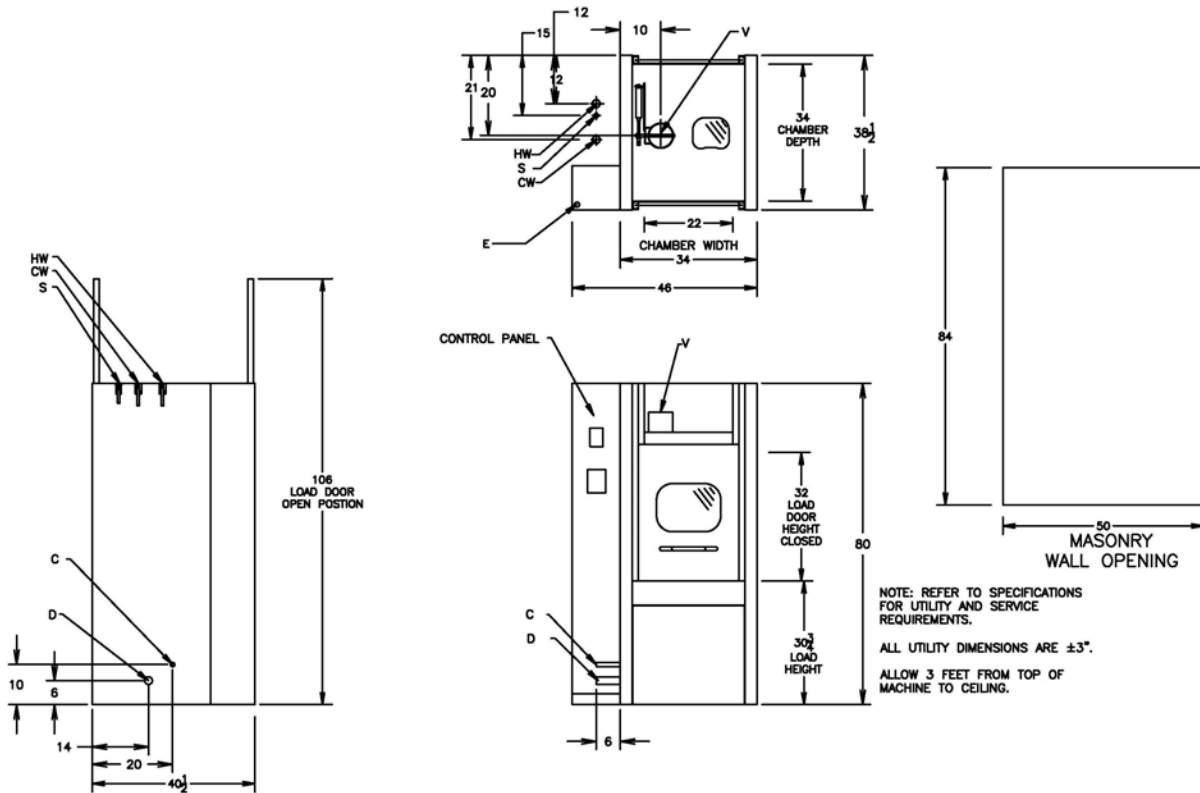
- Pass-Thru Unit
- Right or Left Hand Services
- S/S Recirculation Piping and Components
- House Hot Water Heat Exchanger
- Automatic Damper
- Drain Discharge Cool Down
- Non-Vented Vapor Condenser
- Air Compressor
- Seismic Tie Down
- Strip Chart Recorder
- Ethernet or RS-485 Data Port
- Modem
- Detergent Dispensing Systems
- pH Neutralization System
- pH Neutralization Monitoring System
- Electric Heat
- Pulsating Wash

***Make a Difference...Make it LYNX!***

## UTILITIES: 302BW

|     |            |                          |           |  |
|-----|------------|--------------------------|-----------|--|
| E   | Electrical | 3-60-460 V               | 5 Hp      |  |
| S   | Steam      | 1 ½"NPT                  | 30-80 PSI | 350 #/Hr Flow Rate<br>600 #/Hr with Optional Hot<br>Water Heat Exchanger |
| HW  | Hot Water  | 1" NPT                   | 35 PSI    | 30 GPM @ 140°F ± 5°F<br>20-140 Gal/Load Consumption                      |
| C   | Condensate | 1" NPT                   |           |  |
| D   | Drain      | 4" Floor Drain (Minimum) | 90 GPM    | Flow Rate @ 200°F  |
| V   | Vent       | 6" ID Duct               | 200 CFM   | Saturated Vapor @ 190°F  |
| A   | Air        | ½" NPT                   | 80 PSI    | 4 CFM Flow Rate  |
| CW* | Cold Water | 1" NPT                   | 50 PSI    | 40 GPM @ 50°F ± 5°F  |

\*CW – Required if drain discharge cool down package is ordered



### NOTE:

- The selection of certain options could reduce the above stated utilities. Please consult your LYNX representative to discuss your specific requirements.
- Drawing data is for general reference only. Each sized unit and selected options will effect the overall machine size. Obtain certified drawings for design and installation details.
- Specifications are subject to change without notice.