



A Donald **BASIL** Company

# Life Science Solutions

The LYNX mission is to provide Animal Care Washing Systems of the highest standards, quality, and reliability in the industry. Our service and customer care will be unmatched.

## Model 302BW Bottle Washer

### APPLICATION:

The Bottle Washer is a heavy duty, single chamber, hydro-spray washer designed for thorough, efficient cleaning of feeder bottles and miscellaneous items used in the care of laboratory animals.

### STANDARD FEATURES:

- Vertical Sliding Door
- Rotating Spray Jet System
- Personnel Safety Features
- Micro-Computer Control System
- Automatic Ten-Phase Treatment Cycle
- Temperature Guarantee
- Insulated Construction
- Incoming Utility Gauges
- Interior Illumination

### CONSTRUCTION:

- All Stainless Steel Construction
- Automatic Water Level Control
- 3 HP Treatment Pump
- Stainless Steel Steam Coil Heating
- Touch Screen Operator Interface
- Programmable Cycles
- Direct Reading Pump Pressure Gauge
- Double-Pane Glass Window

### ACCESSORIES:

- Barrier Wall Flange Assembly
- Modular Wall
- Transfer Cart
- Bottom Rotary Jet Spray Header
- Bottom Fixed Jet Spray Header
- Feeder Bottle Baskets



### SIZE:

**Compartment:** 22" wide x 32" high x 34" deep

**Overall Unit:** 46" wide x 80" high x 40½" deep

**Note:** Washer can be designed to any size to meet new or existing applications.

### OPTIONAL FEATURES:

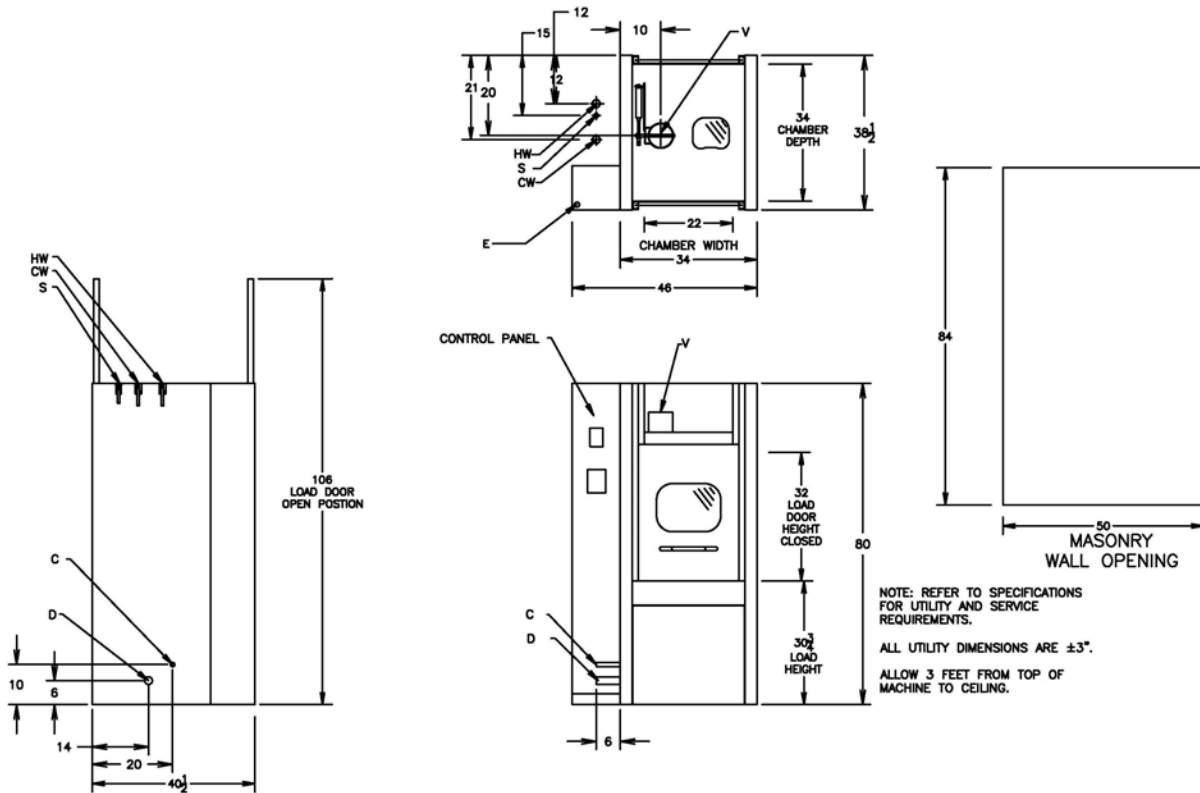
- Pass-Thru Unit
- Right or Left Hand Services
- S/S Recirculation Piping and Components
- House Hot Water Heat Exchanger
- Automatic Damper
- Drain Discharge Cool Down
- Non-Vented Vapor Condenser
- Air Compressor
- Seismic Tie Down
- Strip Chart Recorder
- Ethernet or RS-485 Data Port
- Modem
- Detergent Dispensing Systems
- pH Neutralization System
- pH Neutralization Monitoring System
- Electric Heat
- Pulsating Wash

***Make a Difference... Make it LYNX!***

## UTILITIES: 302BW

E	Electrical	3-60-460 V	5 Hp	
S	Steam	1 ½"NPT	30-80 PSI	350 #/Hr Flow Rate 600 #/Hr with Optional Hot Water Heat Exchanger
HW	Hot Water	1" NPT	35 PSI	30 GPM @ 140°F ± 5°F 20-140 Gal/Load Consumption
C	Condensate	1" NPT		
D	Drain	4" Floor Drain (Minimum)	90 GPM	Flow Rate @ 200°F
V	Vent	6" ID Duct	200 CFM	Saturated Vapor @ 190°F
A	Air	½" NPT	80 PSI	4 CFM Flow Rate
CW*	Cold Water	1" NPT	50 PSI	40 GPM @ 50°F ± 5°F

\*CW – Required if drain discharge cool down package is ordered



### NOTE:

- The selection of certain options could reduce the above stated utilities. Please consult your LYNX representative to discuss your specific requirements.
- Drawing data is for general reference only. Each sized unit and selected options will effect the overall machine size. Obtain certified drawings for design and installation details.
- Specifications are subject to change without notice.



A Donald **BASIL** Company

# Life Science Solutions

The LYNX mission is to provide Animal Care Washing Systems of the highest standards, quality, and reliability in the industry. Our service and customer care will be unmatched

## Model 310LX Cage and Bottle Washer

### APPLICATION:

The Cage and Bottle Washer is a heavy duty, single chamber, hydro-spray washer designed for thorough, efficient cleaning of cages, racks, debris pans, and miscellaneous items used in the care of laboratory animals.

### STANDARD FEATURES:

- Vertical Sliding Door
- Oscillating Spray Jet System
- Personnel Safety Features
- Micro-Computer Control System
- Automatic Ten Phase Treatment Cycle
- Automatic Self-Cleaning Screen
- Temperature Guarantee
- Insulated Construction
- Incoming Utility Gauges
- Interior Illumination

### CONSTRUCTION:

- All Stainless Steel Construction
- Automatic Water Level Control
- 7 ½ HP Treatment Pump
- Stainless Steel Steam Coil Heating
- Touch Screen Operator Interface
- Programmable Cycles
- Direct Reading Pump Pressure Gauge
- Double-Pane Glass Window

### ACCESSORIES:

- Stainless Steel Mouse Box Rack
- Stainless Steel Rat Box Rack
- Stainless Steel Pan Wash Rack
- Transfer Cart
- Barrier Wall Flange Assembly



### SIZE:

**Compartment:** 48" wide x 32" high x 34" deep  
**Overall Unit:** 72" wide x 82" high x 38 ½" deep  
**Note:** Washer can be designed to any size to meet new or existing applications.

### OPTIONAL FEATURES:

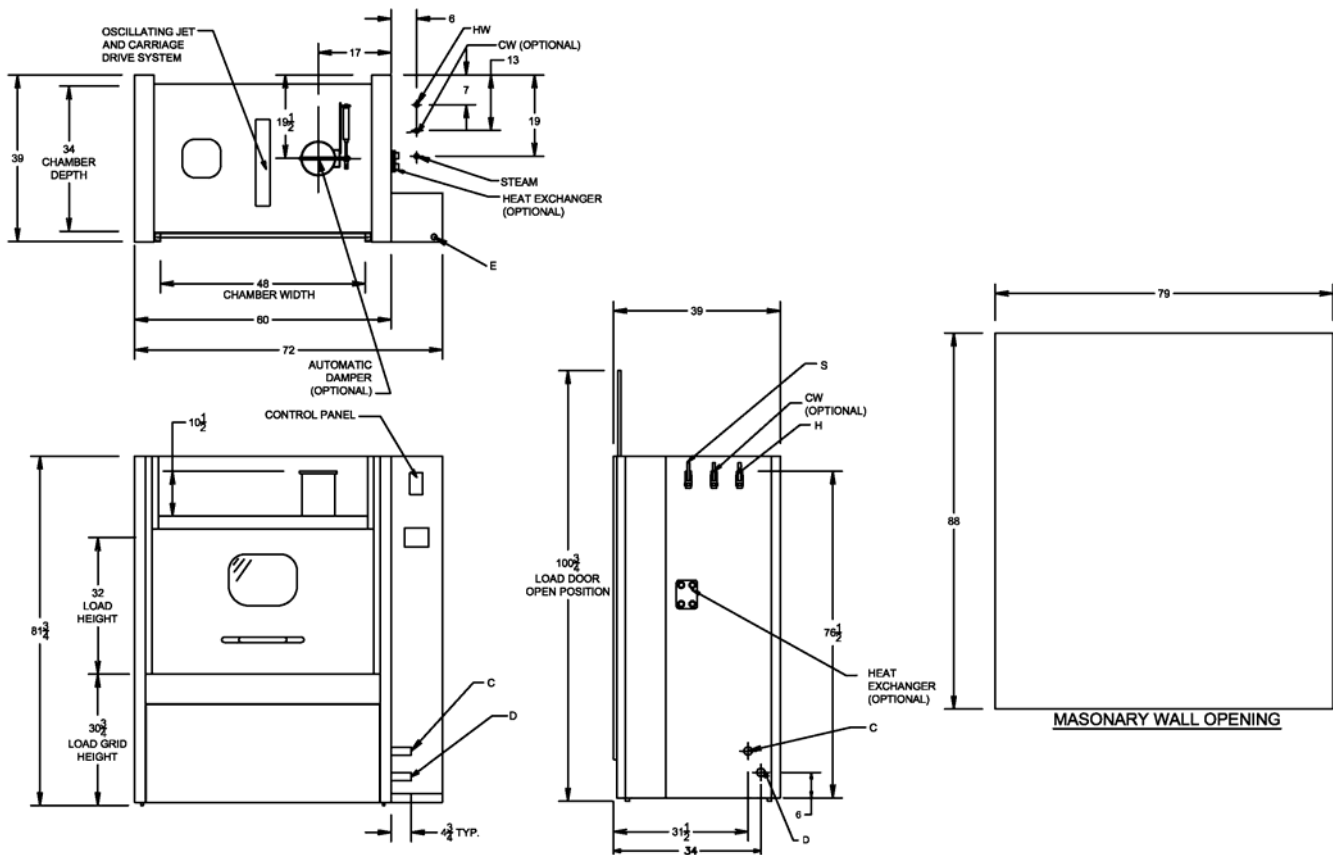
- High Capacity Center Header System
- Pass-Thru Unit
- Right or Left Hand Services
- S/S Recirculation Piping and Components
- House Hot Water Heat Exchanger
- Cold Water Fill
- Automatic Damper
- Exhaust Fan
- Drain Discharge Cool Down
- Non-Vented Vapor Condenser
- Pass-Thru Door Interlock System
- Air Compressor
- Seismic Tie Down
- Strip Chart Recorder
- Ethernet or RS-485 Data Port
- Modem
- Detergent Dispensing Systems
- pH Neutralization System
- pH Neutralization Monitoring System
- Electric Heat
- **LYNX OPTI-Wash™ System**

***Make a Difference...Make it LYNX!***

## UTILITIES: 310LX

E	Electrical	3-60-208/230/460 V	9 Hp	
S	Steam	1 1/2" NPT	30-80 PSI	350 #/Hr Flow Rate 600 #/Hr with Optional Hot Water Heat Exchanger
HW	Hot Water	1" NPT	50 PSI	40 GPM @ 140°F ± 5°F 20-140 Gal/Load Consumption
C	Condensate	1" NPT		
D	Drain	4" Floor Drain (Minimum)	90 GPM	Flow Rate @ 195°F
V	Vent	8" ID Duct	200 CFM	Saturated Vapor @ 190°F
A	Air	1/2" NPT	80 PSI	4 CFM Flow Rate
CW*	Cold Water	1" NPT	50 PSI	40 GPM @ 50°F ± 5°F

\*CW – Required if drain discharge cool down package is ordered



### NOTE:

- The selection of certain options could reduce the above stated utilities. Please consult your LYNX representative to discuss your specific requirements.
- Drawing data is for general reference only. Each sized unit and selected options will effect the overall machine size. Obtain certified drawings for design and installation details.
- Specifications are subject to change without notice.



A Donald **BASIL** Company

# Life Science Solutions

The LYNX mission is to provide Animal Care Washing Systems of the highest standards, quality, and reliability in the industry. Our service and customer care will be unmatched

## Model 320LX Cage and Bottle Washer

### APPLICATION:

The Cage and Bottle Washer is a heavy duty, single chamber, hydro-spray washer designed for thorough, efficient cleaning of cages, racks, debris pans, and miscellaneous items used in the care of laboratory animals.

### STANDARD FEATURES:

- Drop Down Door
- Oscillating Spray Jet System
- Personnel Safety Features
- Micro-Computer Control System
- Automatic Ten Phase Treatment Cycle
- Automatic Self-Cleaning Screen
- Temperature Guarantee
- Insulated Construction
- Incoming Utility Gauges
- Interior Illumination

### CONSTRUCTION:

- All Stainless Steel Construction
- Automatic Water Level Control
- 7 ½ HP Treatment Pump
- Stainless Steel Steam Coil Heating
- Touch Screen Operator Interface
- Programmable Cycles
- Direct Reading Pump Pressure Gauge
- Double-Pane Glass Window

### ACCESSORIES:

- Stainless Steel Mouse Box Rack
- Stainless Steel Rat Box Rack
- Stainless Steel Pan Wash Rack
- Transfer Cart
- Barrier Wall Flange Assembly



### SIZE:

**Compartment:** 48" wide x 32" high x 34" deep

**Overall Unit:** 76" wide x 82" high x 38 ½" deep

**Note:** Washer can be designed to any size to meet new or existing applications.

### OPTIONAL FEATURES:

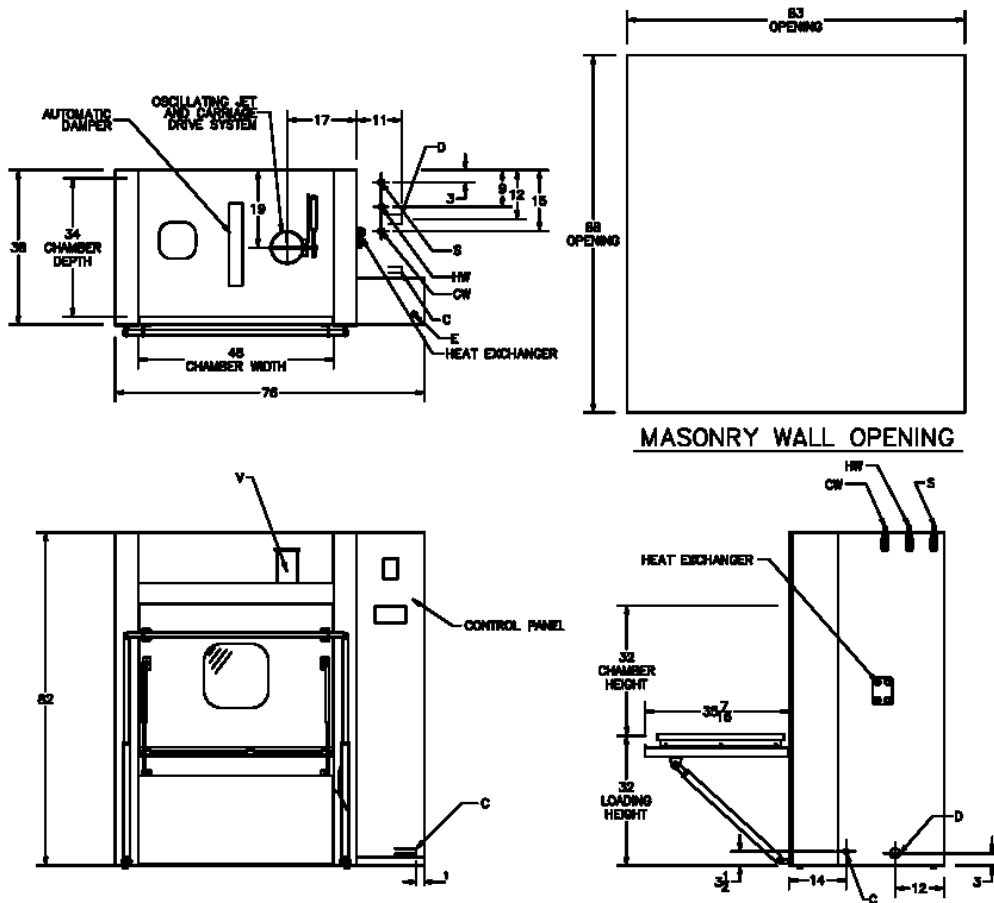
- High Capacity Center Header System
- Pass-Thru Unit
- S/S Recirculation Piping and Components
- House Hot Water Heat Exchanger
- Cold Water Fill
- Automatic Damper
- Exhaust Fan
- Drain Discharge Cool Down
- Non-Vented Vapor Condenser
- Pass-Thru Door Interlock System
- Air Compressor
- Seismic Tie Down
- Strip Chart Recorder
- Ethernet or RS-485 Data Port
- Modem
- Data Collection System
- Detergent Dispensing Systems
- pH Neutralization System
- pH Neutralization Monitoring System
- Electric Heat
- **LYNX OPTI-Wash™ System**

**Make a Difference... Make it LYNX!**

## UTILITIES: 320LX

E	Electrical	3-60-208/230/460 V	9 Hp	
S	Steam	1 ½"NPT	30-80 PSI	350 #/Hr Flow Rate 600 #/Hr with Optional Hot Water Heat Exchanger
HW	Hot Water	1" NPT	35 PSI	30 GPM @ 140°F ± 5°F 20 Gallon Sump Capacity
C	Condensate	1" NPT		
D	Drain	4" Floor Drain (Minimum)	90 GPM	Flow Rate @ 190°F
V	Vent	8" ID Duct	200 CFM	Saturated Vapor @ 190°F
A	Air	½" NPT	80-100 PSI	6 CFM Flow Rate
CW*	Cold Water	1" NPT	35 PSI	40 GPM @ 50°F ± 5°F

\*CW – Required if drain discharge cool down package is ordered



### NOTE:

- The selection of certain options could reduce the above stated utilities. Please consult your LYNX representative to discuss your specific requirements.
- Drawing data is for general reference only. Each sized unit and selected options will effect the overall machine size. Obtain certified drawings for design and installation details.
- Specifications are subject to change without notice.



A Donald **BASIL** Company

# Life Science Solutions

The LYNX mission is to provide Animal Care Washing Systems of the highest standards, quality, and reliability in the industry. Our service and customer care will be unmatched

## Model 330LX Cage and Bottle Washer

### APPLICATION:

The Cage and Bottle Washer is a heavy duty, single chamber, hydro-spray washer designed for thorough, efficient cleaning of cages, racks, debris pans, and miscellaneous items used in the care of laboratory animals.

### STANDARD FEATURES:

- Vertical Sliding Door
- Oscillating Spray Jet System
- Personnel Safety Features
- Micro-Computer Control System
- Automatic Ten Phase Treatment Cycle
- Automatic Self-Cleaning Screen
- Temperature Guarantee
- Insulated Construction
- Incoming Utility Gauges
- Interior Illumination

### CONSTRUCTION:

- All Stainless Steel Construction
- Automatic Water Level Control
- 7 ½ HP Treatment Pump
- Stainless Steel Steam Coil Heating
- Touch Screen Operator Interface
- Programmable Cycles
- Direct Reading Pump Pressure Gauge
- Double-Pane Glass Window

### ACCESSORIES:

- Stainless Steel Mouse Box Rack
- Stainless Steel Rat Box Rack
- Stainless Steel Pan Wash Rack
- Transfer Cart
- Barrier Wall Flange Assembly



### SIZE:

**Compartment:** 48" wide x 32" high x 48" deep

**Overall Unit:** 76" wide x 82" high x 52 ½" deep

**Note:** Washer can be designed to any size to meet new or existing applications.

### OPTIONAL FEATURES:

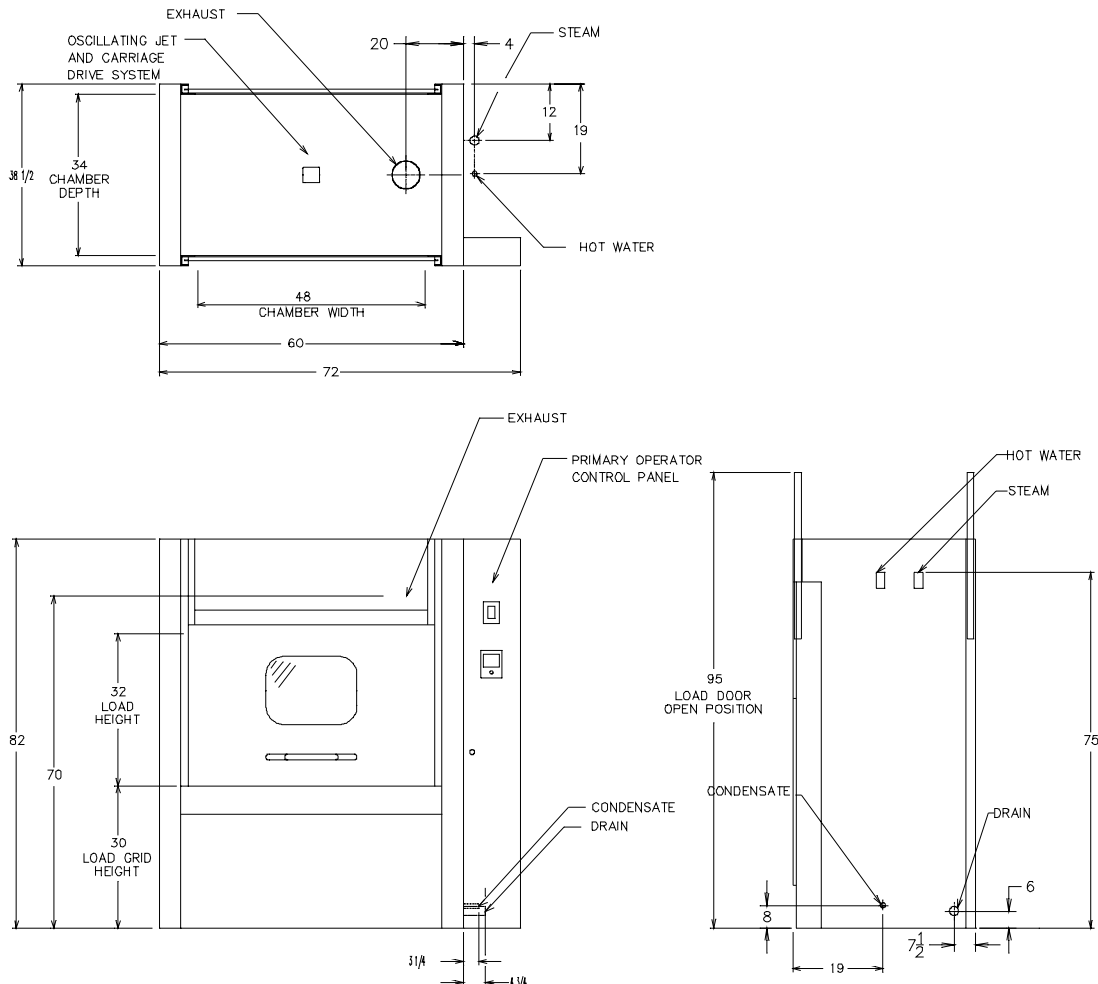
- High Capacity Center Header System
- Pass-Thru Unit
- Right or Left Hand Services
- S/S Recirculation Piping and Components
- House Hot Water Heat Exchanger
- Cold Water Fill
- Automatic Damper
- Exhaust Fan
- Drain Discharge Cool Down
- Non-Vented Vapor Condenser
- Pass-Thru Door Interlock System
- Air Compressor
- Seismic Tie Down
- Strip Chart Recorder
- Ethernet or RS-485 Data Port
- Modem
- Detergent Dispensing Systems
- pH Neutralization System
- pH Neutralization Monitoring System
- Electric Heat
- **LYNX OPTI-Wash™ System**

***Make a Difference...Make it LYNX!***

## UTILITIES: 330LX

E	Electrical	3-60-208/230/460 V	9 Hp	
S	Steam	1 1/2" NPT	30-80 PSI	350 #/Hr Flow Rate 600 #/Hr with Optional Hot Water Heat Exchanger
HW	Hot Water	1" NPT	35 PSI	30 GPM @ 140°F ± 5°F 20 Gallon Sump Capacity
C	Condensate	1" NPT		
D	Drain	4" Floor Drain (Minimum)	90 GPM	Flow Rate @ 190°F
V	Vent	8" ID Duct	200 CFM	Saturated Vapor @ 190°F
A	Air	1/2" NPT	80-100 PSI	4-6 CFM Flow Rate
CW*	Cold Water	1" NPT	35 PSI	30 GPM @ 50°F ± 5°F

\*CW – Required if drain discharge cool down package is ordered



### NOTE:

- The selection of certain options could reduce the above stated utilities. Please consult your LYNX representative to discuss your specific requirements.
- Drawing data is for general reference only. Each sized unit and selected options will effect the overall machine size. Obtain certified drawings for design and installation details.
- Specifications are subject to change without notice.



A Donald **BASIL** Company

# Life Science Solutions

The LYNX mission is to provide Animal Care Washing Systems of the highest standards, quality, and reliability in the industry. Our service and customer care will be unmatched

## Model 340LX Cage and Bottle Washer

### APPLICATION:

The Cage and Bottle Washer is a heavy duty, single chamber, hydro-spray washer designed for thorough, efficient cleaning of cages, racks, debris pans, and miscellaneous items used in the care of laboratory animals.

### STANDARD FEATURES:

- Drop Down Door
- Oscillating Spray Jet System
- Personnel Safety Features
- Micro-Computer Control System
- Automatic Ten Phase Treatment Cycle
- Automatic Self-Cleaning Screen
- Temperature Guarantee
- Insulated Construction
- Incoming Utility Gauges
- Interior Illumination

### CONSTRUCTION:

- All Stainless Steel Construction
- Automatic Water Level Control
- 7 ½ HP Treatment Pump
- Stainless Steel Steam Coil Heating
- Touch Screen Operator Interface
- Programmable Cycles
- Direct Reading Pump Pressure Gauge
- Double-Pane Glass Window

### ACCESSORIES:

- Stainless Steel Mouse Box Rack
- Stainless Steel Rat Box Rack
- Stainless Steel Pan Wash Rack
- Transfer Cart
- Barrier Wall Flange Assembly



### SIZE:

**Compartment:** 48" wide x 32" high x 48" deep

**Overall Unit:** 72" wide x 82" high x 55" deep

**Note:** Washer can be designed to any size to meet new or existing applications.

### OPTIONAL FEATURES:

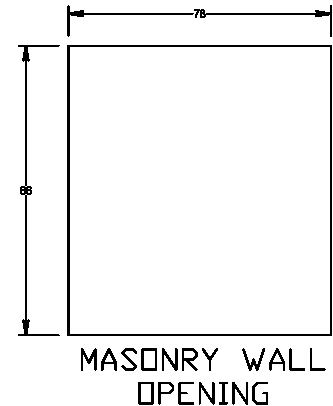
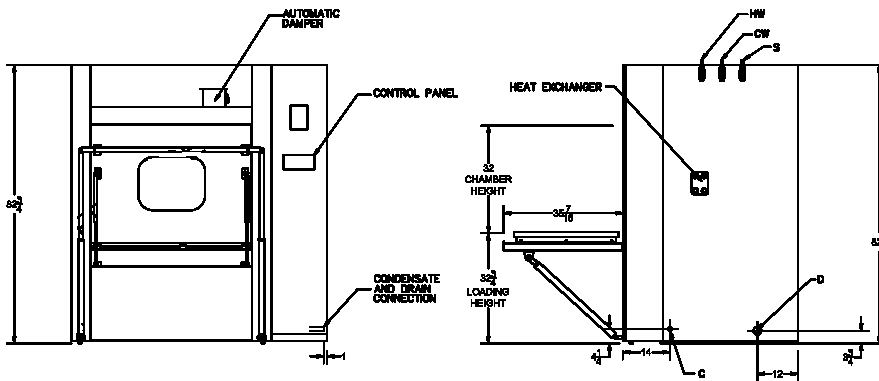
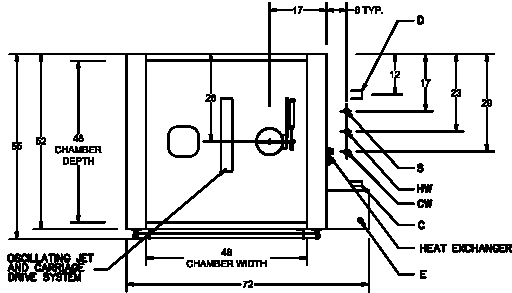
- High Capacity Center Header System
- Pass-Thru Unit
- S/S Recirculation Piping and Components
- House Hot Water Heat Exchanger
- Cold Water Fill
- Automatic Damper
- Exhaust Fan
- Drain Discharge Cool Down
- Non-Vented Vapor Condenser
- Pass-Thru Door Interlock System
- Air Compressor
- Seismic Tie Down
- Strip Chart Recorder
- Ethernet or RS-485 Data Port
- Modem
- Data Collection System
- Detergent Dispensing Systems
- pH Neutralization System
- pH Neutralization Monitoring System
- Electric Heat
- **LYNX OPTI-Wash™ System**

**Make a Difference...Make it LYNX!**

## UTILITIES: 340LX

E	Electrical	3-60-208/230/460 V	9 Hp	
S	Steam	1 1/2" NPT	30-80 PSI	350 #/Hr Flow Rate 600 #/Hr with Optional Hot Water Heat Exchanger
HW	Hot Water	1" NPT	35 PSI	30 GPM @ 140°F ± 5°F 20 Gallon Sump Capacity
C	Condensate	1" NPT		
D	Drain	4" Floor Drain (Minimum)	90 GPM	Flow Rate @ 190°F
V	Vent	8" ID Duct	200 CFM	Saturated Vapor @ 190°F
A	Air	1/2" NPT	80-100 PSI	6 CFM Flow Rate
CW*	Cold Water	1" NPT	35 PSI	40 GPM @ 50°F ± 5°F

\*CW – Required if drain discharge cool down package is ordered



### NOTE:

- The selection of certain options could reduce the above stated utilities. Please consult your LYNX representative to discuss your specific requirements.
- Drawing data is for general reference only. Each sized unit and selected options will effect the overall machine size. Obtain certified drawings for design and installation details
- Specifications are subject to change without notice.