



A Donald **BASIL** Company

Life Science Solutions

The LYNX mission is to provide Animal Care Washing Systems of the highest standards, quality, and reliability in the industry. Our service and customer care will be unmatched.

Model 410LX Cage and Rack Washer

APPLICATION:

The Cage and Rack Washer is a heavy duty, large capacity, hydro-spray washer designed for thorough, efficient cleaning of cages, racks, debris pans, and miscellaneous items used in the care of laboratory animals. Pit mounting is standard.

STANDARD FEATURES:

- Modular Construction
- Knock-Down Shipment
- Oscillating Spray Jet System
- Personnel Safety Features
- Micro-Computer Control System
- Automatic Ten Phase Treatment Cycle
- Automatic Self-Cleaning Screen
- Temperature Guarantee
- Insulated Construction
- Incoming Utility Gauges
- Interior Illumination

CONSTRUCTION:

- All Stainless Steel Construction
- Automatic Water Level Control
- 10 HP Treatment Pump
- Stainless Steel Steam Coil Heating
- Touch Screen Operator Interface
- Programmable Cycles
- Direct Reading Pump Pressure Gauge
- Double-Pane Glass Window

ACCESSORIES:

- Floor Ramps
- Modular Walls
- Bottle Wash Cart
- Cage Wash Cart



SIZE:

Compartment: 46" wide x 85" high x 92" long

Overall Unit: 86" wide x 104" high x 100" long

Note: Washer can be designed to any size to meet new or existing applications. (Overall size may vary upon options chosen)

OPTIONAL FEATURES:

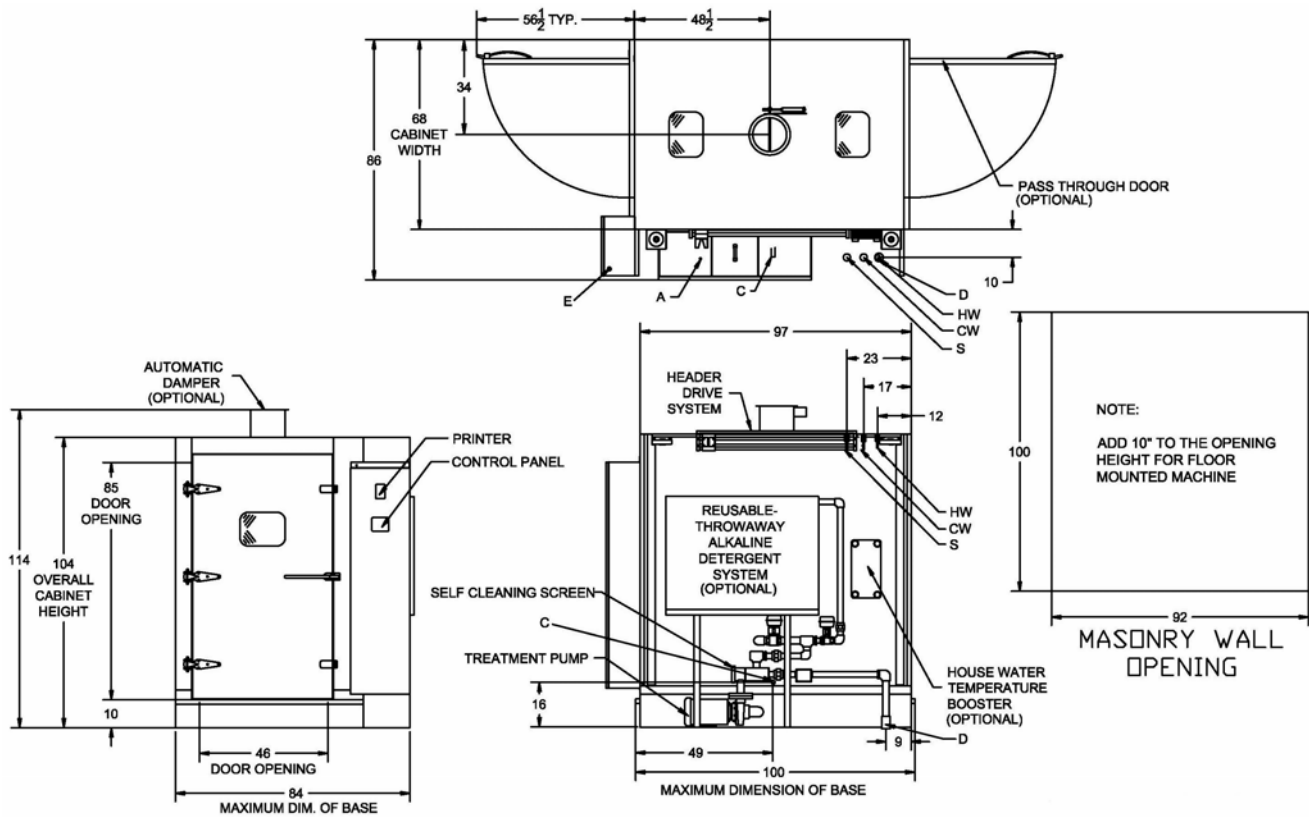
- Pass-Thru Unit
- Pit Mounted or Floor Mounted
- Right or Left Hand Services
- Re-usable Throwaway Alkaline and/or Acid Tanks
- S/S Recirculation Piping and Components
- House Hot Water Heat Exchanger
- Automatic Damper
- Exhaust Fan
- Drain Discharge Cool Down/Tank
- Feeder Bottle Washing System
- Pan Washing
- Automatic Watering Rack Flush System
- Pass-Thru Door Interlock System
- Air Compressor
- Seismic Tie Down
- Strip Chart Recorder
- Ethernet or RS-485 Data Port
- Modem
- Detergent Dispensing Systems
- pH Neutralization System
- **LYNX OPTI-Wash™ System**

Make a Difference... Make it LYNX!

UTILITIES: 410LX

E	Electrical	3-60-208/230/460 V	12 Hp	
S	Steam	2" NPT	35-80 PSI	Dynamic \pm 5 PSI 600 #/Hr Flow Rate, 1200 #/Hr with Optional Hot Water Heat Exchanger
HW	Hot Water	1½" NPT	35 PSI	50 GPM @ 140°F \pm 5°F 40 Gallon Sump Capacity
C	Condensate	1" NPT		
D	Drain	4" Floor Drain (Minimum)	120 GPM	Flow Rate @ 200°F
V	Vent	12" ID Duct	450 CFM	Saturated Vapor @ 190 °F
A	Air	½" NPT	80-100 PSI	6 CFM Flow Rate
CW*	Cold Water	1½" NPT	35 PSI	60 GPM @ 50°F \pm 5°F

*CW – Required if drain discharge cool down package is ordered



NOTE:

- The selection of certain options could reduce the above stated utilities. Please consult your LYNX representative to discuss your specific requirements.
- Drawing data is for general reference only. Each sized unit and selected options will effect the overall machine size. Obtain certified drawings for design and installation details.
- Specifications are subject to change without notice.



A Donald **BASIL** Company

Life Science Solutions

The LYNX mission is to provide Animal Care Washing Systems of the highest standards, quality, and reliability in the industry. Our service and customer care will be unmatched

Model 420LX Cage and Rack Washer

APPLICATION:

The Cage and Rack Washer is a heavy duty, large capacity, hydro-spray washer designed for thorough, efficient cleaning of cages, racks, debris pans, and miscellaneous items used in the care of laboratory animals. Pit mounting is standard.

STANDARD FEATURES:

- Modular Construction
- Knock-Down Shipment
- Oscillating Spray Jet System
- Personnel Safety Features
- Micro-Computer Control System
- Automatic Ten Phase Treatment Cycle
- Automatic Self-Cleaning Screen
- Temperature Guarantee
- Insulated Construction
- Incoming Utility Gauges
- Interior Illumination

CONSTRUCTION:

- All Stainless Steel Construction
- Automatic Water Level Control
- 15 HP Treatment Pump
- Stainless Steel Steam Coil Heating
- Touch Screen Operator Interface
- Programmable Cycles
- Direct Reading Pump Pressure Gauge
- Double-Pane Glass Window

ACCESSORIES:

- Floor Ramps
- Modular Walls
- Bottle Wash Cart
- Cage Wash Cart



SIZE:

Compartment: 46" wide x 85" high x 141" long

Overall Unit: 86" wide x 104" high x 149" long

Note: Washer can be designed to any size to meet new or existing applications. (Overall size may vary upon options chosen)

OPTIONAL FEATURES:

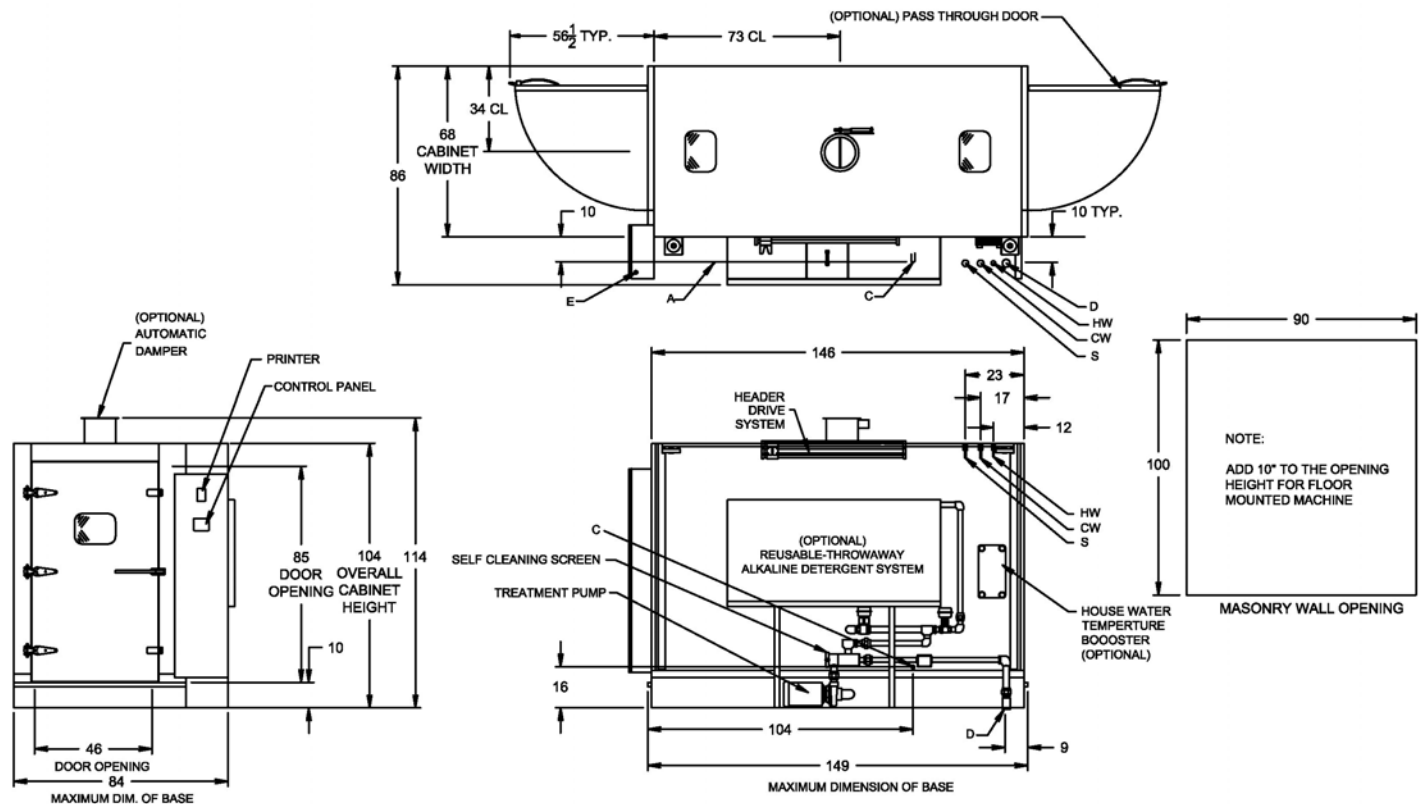
- Pass-Thru Unit
- Pit Mounted or Floor Mounted
- Right or Left Hand Services
- Re-usable Throwaway Alkaline and/or Acid Tanks
- S/S Recirculation Piping and Components
- House Hot Water Heat Exchanger
- Automatic Damper
- Exhaust Fan
- Drain Discharge Cool Down/Tank
- Feeder Bottle Washing System
- Pan Washing
- Automatic Watering Rack Flush System
- Pass-Thru Door Interlock System
- Air Compressor
- Seismic Tie Down
- Strip Chart Recorder
- Ethernet or RS-485 Data Port
- Modem
- Detergent Dispensing Systems
- pH Neutralization System
- **LYNX OPTI-Wash™ System**

Make a Difference...Make it LYNX!

UTILITIES: 420LX

E	Electrical	3-60-208/230/460 V	16 Hp	
S	Steam	2" NPT	35-80 PSI	Dynamic ± 5 PSI 800 #/Hr Flow Rate 1200 #/Hr with Optional Hot Water Heat Exchanger
HW	Hot Water	1½" NPT	35 PSI	50 GPM @ 140°F ± 5 °F 60 Gallon Sump Capacity
C	Condensate	1" NPT		
D	Drain	4" Floor Drain (Minimum)	180 GPM	Flow Rate @ 200°F
V	Vent	12" ID Duct	750 CFM	Saturated Vapor @ 190 °F
A	Air	½" NPT	100 PSI	6 CFM Flow Rate
CW*	Cold Water	1½" NPT	35 PSI	75 GPM @ 50°F ± 5 °F

*CW – Required if drain discharge cool down package is ordered



NOTE:

- The selection of certain options could reduce the above stated utilities. Please consult your LYNX representative to discuss your specific requirements.
- Drawing data is for general reference only. Each sized unit and selected options will effect the overall machine size. Obtain certified drawings for design and installation details.
- Specifications are subject to change without notice.



A Donald **BASIL** Company

Life Science Solutions

The LYNX mission is to provide Animal Care Washing Systems of the highest standards, quality, and reliability in the industry. Our service and customer care will be unmatched

Model 430LX Cage and Rack Washer

APPLICATION:

The Cage and Rack Washer is a heavy duty, large capacity, hydro-spray washer designed for thorough, efficient cleaning of cages, racks, debris pans, and miscellaneous items used in the care of laboratory animals. Pit mounting is standard.

STANDARD FEATURES:

- Modular Construction
- Knock-Down Shipment
- Oscillating Spray Jet System
- Personnel Safety Features
- Micro-Computer Control System
- Automatic Ten Phase Treatment Cycle
- Automatic Self-Cleaning Screen
- Temperature Guarantee
- Insulated Construction
- Incoming Utility Gauges
- Interior Illumination

CONSTRUCTION:

- All Stainless Steel Construction
- Automatic Water Level Control
- 2-10 HP Treatment Pumps
- Stainless Steel Steam Coil Heating
- Touch Screen Operator Interface
- Programmable Cycles
- Direct Reading Pump Pressure Gauge
- Double-Pane Glass Window

ACCESSORIES:

- Floor Ramps
- Modular Walls
- Bottle Wash Cart
- Cage Wash Cart



SIZE:

Compartment: 46" wide x 85" high x 188" long

Overall Unit: 86" wide x 104" high x 196" long

Note: Washer can be designed to any size to meet new or existing applications. (Overall size may vary upon options chosen)

OPTIONAL FEATURES:

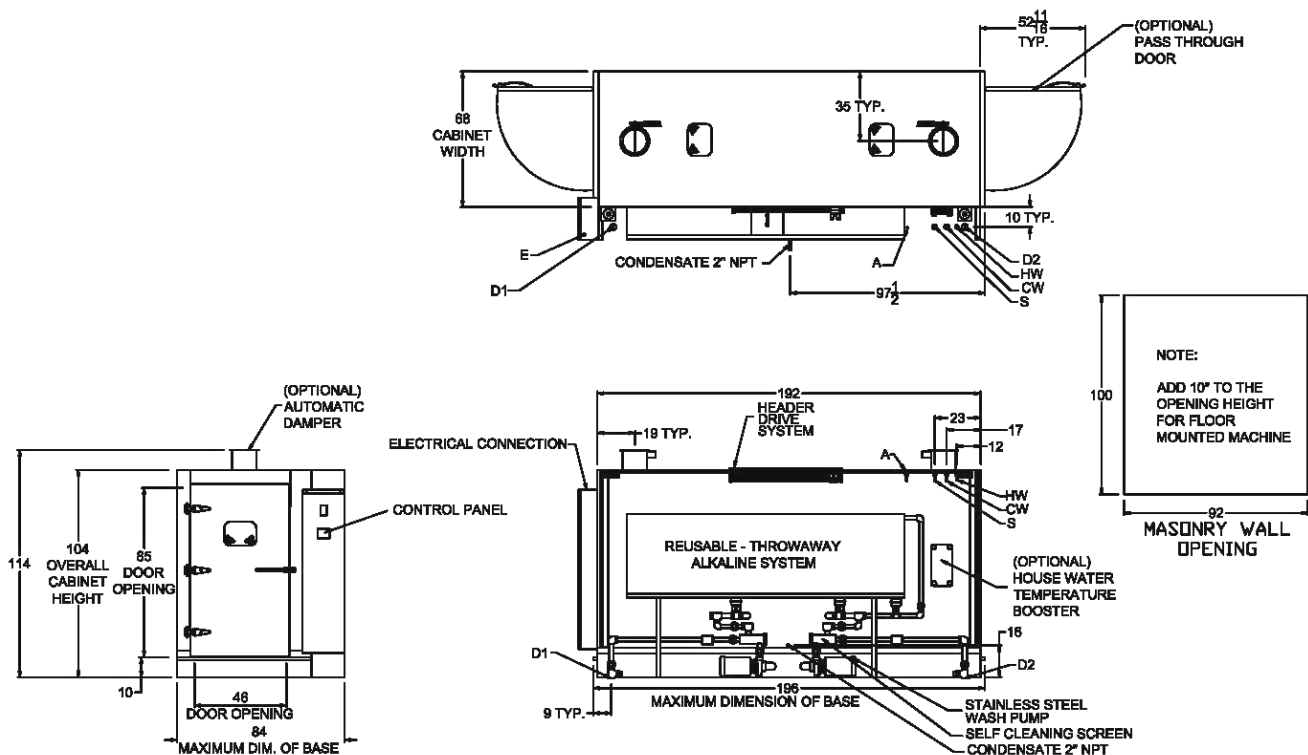
- Pass-Thru Unit
- Pit Mounted or Floor Mounted
- Right or Left Hand Services
- Re-usable Throwaway Alkaline and/or Acid Tanks
- S/S Recirculation Piping and Components
- House Hot Water Heat Exchanger
- Automatic Damper
- Exhaust Fan
- Drain Discharge Cool Down/Tank
- Feeder Bottle Washing System
- Pan Washing
- Automatic Watering Rack Flush System
- Pass-Thru Door Interlock System
- Air Compressor
- Seismic Tie Down
- Strip Chart Recorder
- Ethernet or RS-485 Data Port
- Modem
- Detergent Dispensing Systems
- pH Neutralization System
- **LYNX OPTI-Wash™ System**

Make a Difference... Make it LYNX!

UTILITIES: 430LX

E	Electrical	3-60-208/230/460 V	24 Hp	
S	Steam	2" NPT	35-80 PSI	Dynamic \pm 5 PSI 1000 #/Hr Flow Rate 1200 #/Hr with Optional Hot Water Heat Exchanger
HW	Hot Water	1½" NPT	35 PSI	50 GPM @ 140°F \pm 5°F 75 Gallon Sump Capacity
C	Condensate	2" NPT		
D	Drain	4" Floor Drain (Minimum)	120 GPM	Flow Rate @ 200°F
V	Vent	12" ID Duct (2 Required)	450 CFM Ea.	Saturated Vapor @ 190 °F
A	Air	½" NPT	100 PSI	6 CFM Flow Rate
CW*	Cold Water	1½" NPT	35 PSI	100 GPM @ 50°F \pm 5°F

*CW – Required if drain discharge cool down package is ordered



NOTE:

- The selection of certain options could reduce the above stated utilities. Please consult your LYNX representative to discuss your specific requirements.
- Drawing data is for general reference only. Each sized unit and selected options will effect the overall machine size. Obtain certified drawings for design and installation details.
- Specifications are subject to change without notice.



A Donald **BASIL** Company

Life Science Solutions

The LYNX mission is to provide Animal Care Washing Systems of the highest standards, quality, and reliability in the industry. Our service and customer care will be unmatched

Model 450LX Cage and Rack Washer

APPLICATION:

The Cage and Rack Washer is a heavy duty, large capacity, hydro-spray washer designed for thorough, efficient cleaning of cages, racks, debris pans, and miscellaneous items used in the care of laboratory animals. Pit mounting is standard.

STANDARD FEATURES:

- Modular Construction
- Knock-Down Shipment
- Oscillating Spray Jet System
- Personnel Safety Features
- Micro-Computer Control System
- Automatic Ten Phase Treatment Cycle
- Automatic Self-Cleaning Screen
- Temperature Guarantee
- Insulated Construction
- Incoming Utility Gauges
- Interior Illumination

CONSTRUCTION:

- All Stainless Steel Construction
- Automatic Water Level Control
- 2-15 HP Treatment Pumps
- Stainless Steel Steam Coil Heating
- Touch Screen Operator Interface
- Programmable Cycles
- Direct Reading Pump Pressure Gauge
- Double-Pane Glass Window

ACCESSORIES:

- Floor Ramps
- Modular Walls
- Bottle Wash Cart
- Cage Wash Cart



SIZE:

Compartment: 72" wide x 85" high x 141" long

Overall Unit: 108" wide x 104" high x 149" long

Note: Washer can be designed to any size to meet new or existing applications. (Overall size may vary upon options chosen)

OPTIONAL FEATURES:

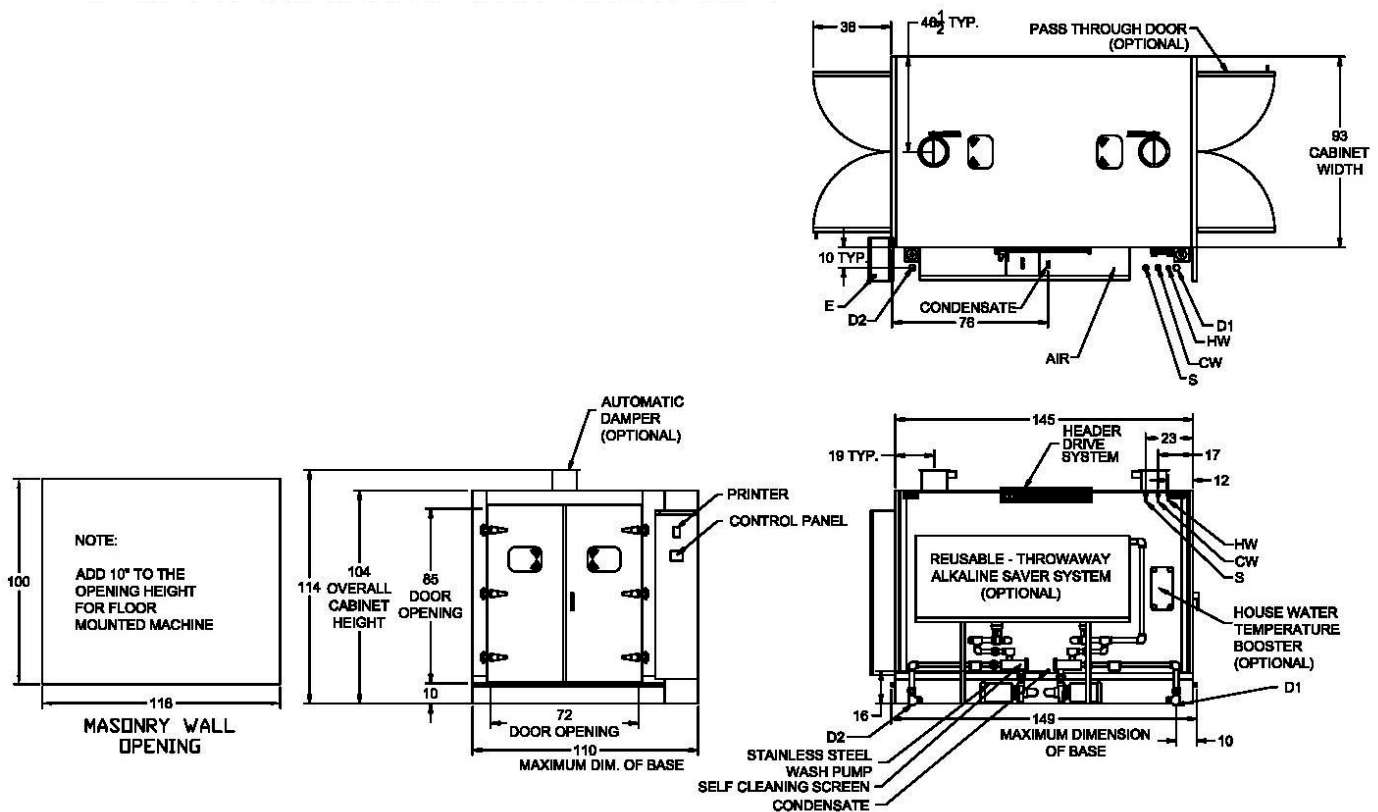
- Center Header System
- Pass-Thru Unit
- Pit Mounted or Floor Mounted
- Right or Left Hand Services
- Re-usable Throwaway Alkaline and/or Acid Tanks
- S/S Recirculation Piping and Components
- House Hot Water Heat Exchanger
- Automatic Damper
- Exhaust Fan
- Drain Discharge Cool Down/Tank
- Feeder Bottle Washing System
- Pan Washing
- Automatic Watering Rack Flush System
- Pass-Thru Door Interlock System
- Air Compressor
- Seismic Tie Down
- Strip Chart Recorder
- Ethernet or RS-485 Data Port
- Modem
- Detergent Dispensing Systems
- pH Neutralization System
- **LYNX OPTI-Wash™ System**

Make a Difference... Make it LYNX!

UTILITIES: 450LX

E	Electrical	3-60-208/230/460 V	32 Hp	
S	Steam	2" NPT	35-80 PSI	Dynamic \pm 5 PSI 1000 #/Hr Flow Rate 1200 #/Hr with Optional Hot Water Heat Exchanger
HW	Hot Water	1½" NPT	35 PSI	50 GPM @ 140°F \pm 5°F 75 Gallon Sump Capacity
C	Condensate	2" NPT		
D	Drain	4" Floor Drain (Minimum) (2) required	120 GPM	Flow Rate @ 200°F
V	Vent	12" ID Duct (2 required)	450 CFM Ea.	Saturated Vapor @ 190 °F
A	Air	½" NPT	80-100 PSI	6 CFM Flow Rate
CW*	Cold Water	1½" NPT	35 PSI	100 GPM @ 50°F \pm 5°F

*CW – Required if drain discharge cool down package is ordered



NOTE:

- The selection of certain options could reduce the above stated utilities. Please consult your LYNX representative to discuss your specific requirements.
- Drawing data is for general reference only. Each sized unit and selected options will effect the overall machine size. Obtain certified drawings for design and installation details.
- Specifications are subject to change without notice.



A Donald **BASIL** Company

Life Science Solutions

The LYNX mission is to provide Animal Care Washing Systems of the highest standards, quality, and reliability in the industry. Our service and customer care will be unmatched

Model 495LX Cage and Rack Washer

APPLICATION:

The Cage and Rack Washer is a heavy duty, large capacity, hydro-spray washer designed for thorough, efficient cleaning of cages, racks, debris pans, and miscellaneous items used in the care of laboratory animals.

STANDARD FEATURES:

- Modular Construction
- Knock-Down Shipment
- Oscillating Spray Jet System
- Personnel Safety Features
- Micro-Computer Control System
- Automatic Ten Phase Treatment Cycle
- Automatic Self-Cleaning Screen
- Temperature Guarantee
- Insulated Construction
- Incoming Utility Gauges
- Interior Illumination

CONSTRUCTION:

- All Stainless Steel Construction
- Automatic Water Level Control
- 10 HP Treatment Pump
- Stainless Steel Steam Coil Heating
- Touch Screen Operator Interface
- Programmable Cycles
- Direct Reading Pump Pressure Gauge
- Double-Pane Glass Window

ACCESSORIES:

- Floor Ramps
- Modular Walls
- Bottle Wash Cart
- Cage Wash Cart



SIZE:

Compartment: 46" wide x 85" high x 92" long

Overall Unit: 86" wide x 100" high x 100" long

Sump Height: 6" high

Note: Washer can be designed to any size to meet new or existing applications. (Overall size may vary upon options chosen)

OPTIONAL FEATURES:

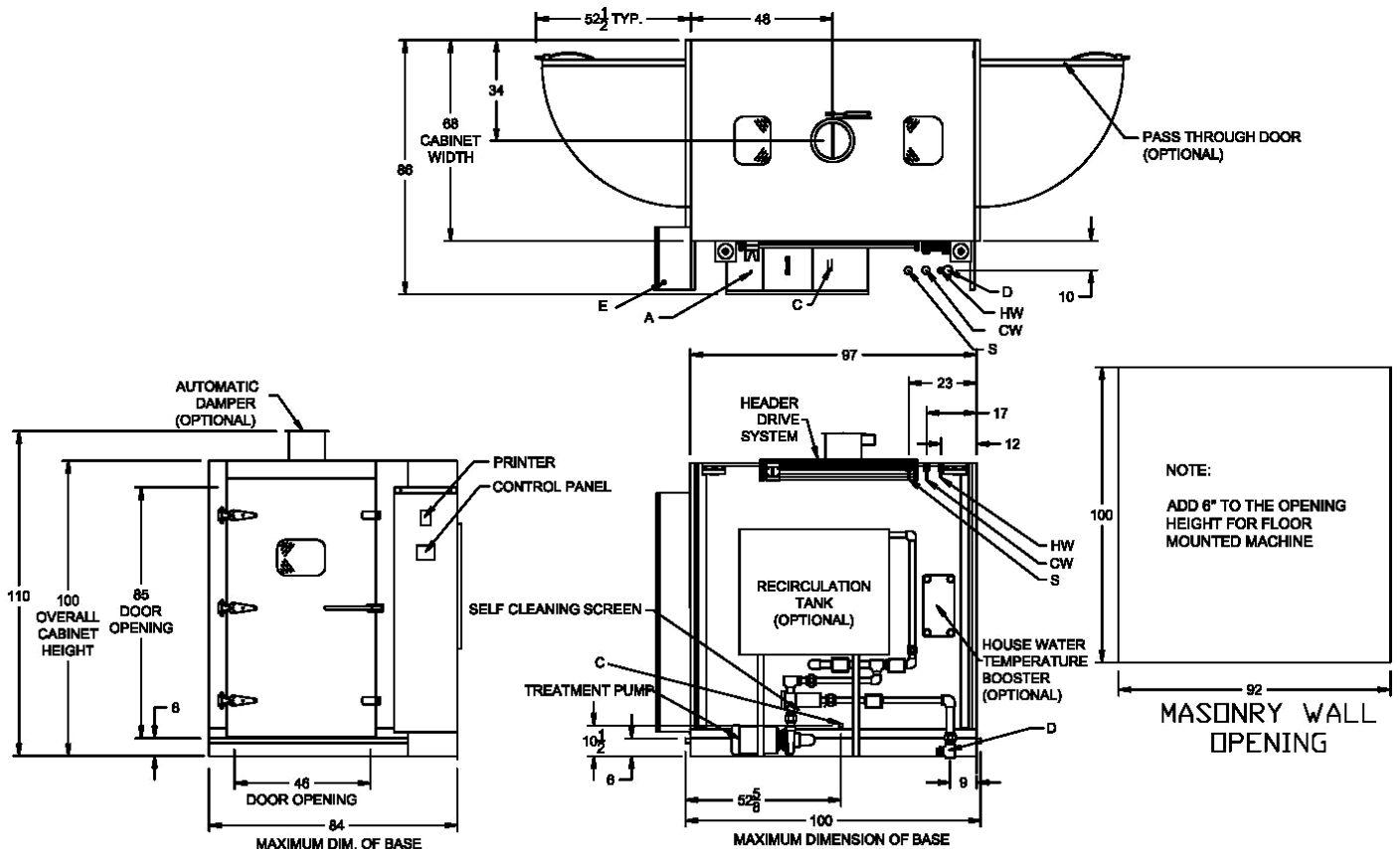
- Pass-Thru Unit
- Pit Mounted or Floor Mounted
- Right or Left Hand Services
- Re-usable Throwaway Alkaline and/or Acid Tanks
- S/S Recirculation Piping and Components
- House Hot Water Heat Exchanger
- Automatic Damper
- Exhaust Fan
- Drain Discharge Cool Down/Tank
- Feeder Bottle Washing System
- Pan Washing
- Automatic Watering Rack Flush System
- Pass-Thru Door Interlock System
- Air Compressor
- Seismic Tie Down
- Strip Chart Recorder
- Ethernet or RS-485 Data Port
- Modem
- Detergent Dispensing Systems
- pH Neutralization System
- **LYNX OPTI-Wash™ System**

Make a Difference... Make it LYNX!

UTILITIES: 495LX

E	Electrical	3-60-208/230/460 V	10 Hp	
S	Steam	2" NPT	35-80 PSI	Dynamic \pm 5 PSI 600 #/Hr Flow Rate 1200 #/Hr with Optional Hot Water Heat Exchanger
HW	Hot Water	1½" NPT	35 PSI	50 GPM @ 140°F \pm 5°F 40 Gallon Sump Capacity
C	Condensate	1" NPT		
D	Drain	4" Floor Drain (Minimum)	120 GPM	Flow Rate @ 200°F
V	Vent	12" ID Duct	450 CFM	Saturated Vapor @ 190 °F
A	Air	½" NPT	100PSI	6 CFM Flow Rate
CW*	Cold Water	1½" NPT	35 PSI	60 GPM @ 50°F \pm 5°F

*CW – Required if drain discharge cool down package is ordered

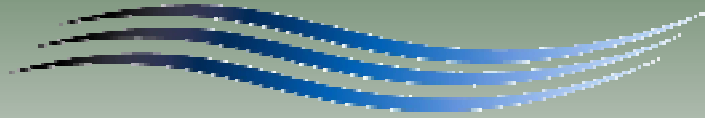


NOTE:

- The selection of certain options could reduce the above stated utilities. Please consult your LYNX representative to discuss your specific requirements.
- Drawing data is for general reference only. Each sized unit and selected options will effect the overall machine size. Obtain certified drawings for design and installation details.
- Specifications are subject to change without notice.

LYNX 810LX “Hybrid”

“The Most Versatile Rack Washer in the Industry...Period!”



Model 810LXS

Green & Flexible Defines this New Washer from LYNX

The LYNX Model 810LX Hybrid utilizes state-of-the-art engineering with utility optimization to provide a washing system that you can truly tailor to the requirements of each individual load.

Our customers have the ability to run short, eco-friendly cycles for mouse/rat cages or traditional washing cycles to clean heavily soiled primate cages, all with a simple push of a button.

The 810LX is equipped with all of the special features that LYNX is known for, including:

810LX “Hybrid” Advantages...

- No Facility Hot Water Required!
- Versatile Cycle Configurations
- Utility Savings
 - Water, Steam, Detergent, Electric
- User-friendly Control System
- Optional Sealed Doors (LXS) for Decon Capabilities

- High Impingement Cleaning Jets
- OPTI-Wash™ System
- Efficient Re-use of Wash Water
- Non-proprietary Parts
- Safety-minded Operator Controls
- Manufactured in the USA
- Unmatched Customer Care



A Donald BASL Company

Make a Difference...Make it LYNX!

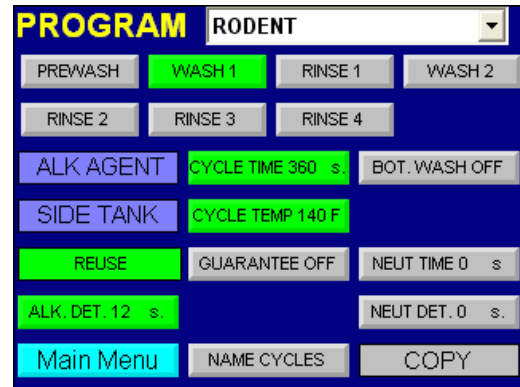
The 810LX "Hybrid"...The Rack Washer You Have Been Waiting for, Made Right Here in the USA!

Approx. Utility Savings vs. other Competitors Rack Washers*...

- 100% Less Hot Water
- 76% Less Cold Water
- 48% Less Steam
- 27% Less Electricity

* All energy savings are approximated and will vary depending on the cycles that are run

Utility Savings



State-of-the-Art Controls with Fully Customized Cycles

810LX RACK WASHER DIMENSIONS:

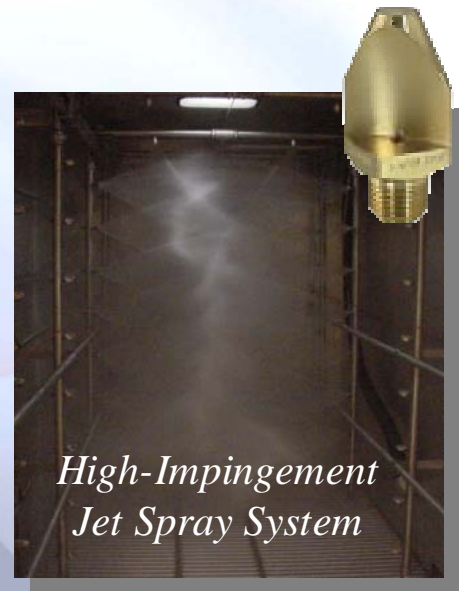
Compartment: 46" wide x 85" high x 92" long

Overall Unit:** 84" wide x 104" high x 100" long

Pit: 86" wide x 12" deep x 101" long

** Add 8" to overall machine and pit width for 810LXS

Note: Washer can be designed to any size to meet new or existing applications. (Overall size may vary upon options chosen)



High-Impingement Jet Spray System

Contact LYNX for additional washing, bedding
and decontamination solutions...

Cage and Rack Washers • Tunnel Cage Washers • Cage and Bottle Washers
Glassware Washers • Bedding Dispensers • Vacuum Bedding Systems
Bottle Fillers • Wash Carts & Accessories • Modular Walls • Refurbishment



A Donald **BASL** Company
Make a Difference...Make it LYNX!

LYNX Product Group • 650 Lake Street • Wilson, New York 14172 • 716-751-3100 • lynxpg.com